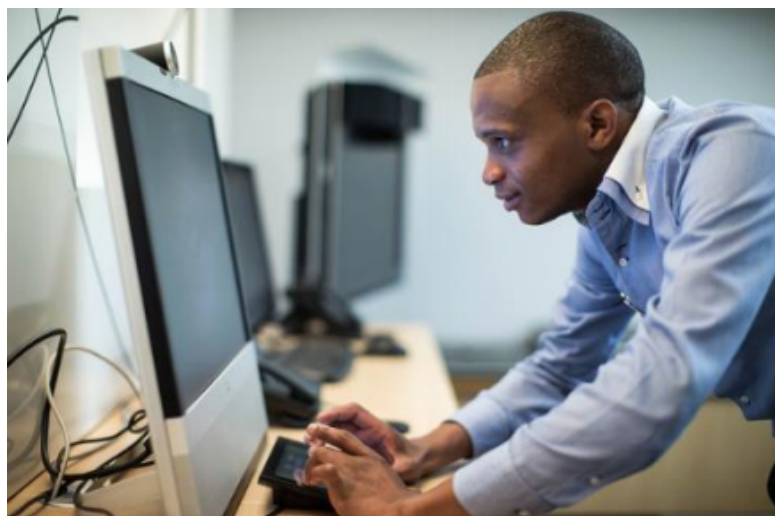


Please feel free to contact us:

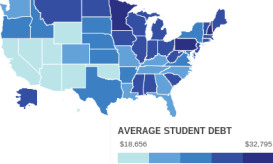
E. [support@theascp.org](mailto:support@theascp.org)  
T. 1.800.368.6109  
Days/Hours: M-Friday  
8:00 am - 6:00 pm EDT  
7:00 am - 5:00 pm CDT



**Mark Your Calendars for the following events from the ASCP!**

Early January.  
Instructor Learning:  
Global Instructor Resources

---



**Student Debt Across the Country**

It may house some

## Enroll Now: Entrepreneurship Course

The entrepreneurial spirit enables innovation, growth, and prosperity around the world and helps transform the economic and social landscape. Technology-based entrepreneurship can encourage innovative solutions and business opportunities to address challenges, enable personal achievement and business success, and help create jobs to grow and sustain local economies.

The Entrepreneurship course is designed to supplement the skills gained through the core NetAcad ICT curricula and help students prepare for new career opportunities. It teaches critical business and financial skills, attitudes, and behaviors to help students develop an

of the most esteemed colleges in the country, but if you want to graduate without backbreaking debt, steer clear of schools along the eastern seaboard. That's what a series of new reports seem to suggest.

Based on those reports from the College Board, the Institute for College Access & Success and data from the Department of Education, personal finance site Debt.com created an interactive map that shows the average student debt and defaults by state in 2013. And it is not pretty on the east side.

Six of the 10 states with the highest debt loads are located in the Northeast.

New Hampshire topped the list, with graduates leaving school with an average \$32,795, about 11 percent higher than the national average of \$28,400.

Illinois ranked 15th at \$28,543 and Indiana ranked 16th.

Seven of the states with the lowest debt loads are in the

entrepreneurial mindset that can empower them to improve their overall quality of life.

Entrepreneurship incorporates a new approach to teaching and learning entrepreneurial skills with interactive, online case studies designed to help students learn business skills and apply networking capabilities within the context of starting a business.

The case studies introduce basic business and financial concepts through activities and scenarios that cultivate and reinforce the critical thinking skills required to become a successful entrepreneur. The Entrepreneurship case studies promote:

- Increased self-confidence and personal motivation
- Improved leadership skills and financial literacy
- Greater mastery of technical skills through applied practice
- Inspiration to start a small business

Register through [NetSpace](#) and gain access to view upcoming webinars, access the full library of webinar recordings, join discussions with speakers and other participants, as well as receive important updates.



## Did you know? Packet Tracer Is Now On Mobile

A new release of Cisco Packet Tracer Mobile for Android

West. New Mexico boasted the lowest average debt in the nation, with students graduating with \$18,656 on average. Yet the state has one of the nation's worst default rates at 20.8 percent.

There are a myriad of reasons why debt and default rates vary from state to state, including the availability of need-based state grant aid, cost of living, the ratio of private to public schools and the amount of students forking over out-of-state tuition. Public schools across the country, meanwhile, have suffered from state disinvestment over the years, which led to increases in tuition and fees.

is now available.

You and your students can now explore various network topologies and troubleshoot in a simulated environment right on your mobile devices.

Download Packet Tracer Mobile for free from the [Google Play](#) store. In the Apps section, search for “Cisco Packet Tracer” and follow the installation instructions.

A Cisco Networking Academy NetSpace account is required to use this application.

Note that the Activity Wizard and multiuser functionality are not supported in this release.

The Packet Tracer Mobile app includes the following features:

- Mobile-friendly interface helps extend the learning experience beyond the classroom
- Supports multiple Android tablets with ARMv7 CPUs running Android 4.1 or later
- Performs many of the same core functions as Packet Tracer 6.1.1 - Student Version
- Allows users to build .pkt configuration files from scratch on a tablet
- Open topology files can be sent by email directly from the app

For more information about Packet Tracer and Packet Tracer Mobile, please review the [resources](#) on CiscoNetSpace.

*Copyright © 2014 The Academy Support Center Partnership, All rights reserved.*

[unsubscribe from this list](#) [update subscription preferences](#)

MailChimp.